



# The Council on Botanical and Horticultural Libraries, Inc.

Newsletter

Number 87

December 2002

## CBHL Website Update

CÉLINE ARSENEAULT, CBHL WEBMASTER  
BOTANIST-LIBRARIAN  
MONTREAL BOTANICAL GARDEN  
MONTREAL, QUEBEC CANADA

A reminder to all that the new home of the new CBHL website is:  
<http://www.ville.montreal.qc.ca/jardin/cbhl>. If you haven't had a chance to check it out, now is the time! A new "Announcements from members" section has been added. Members wishing to bring anything to my attention can e-mail me at: [<carseneault@ville.montreal.qc.ca>](mailto:carseneault@ville.montreal.qc.ca).



The public section of CBHL website has been under work for standardizing its programming, especially the cascading style sheet and will provide a sharp, personalized look to all the pages on the site.

The process of verifying links to member libraries has also been underway. Stay tuned for further developments and news!

## In this issue . . .

### FEATURE ARTICLES & NEWS

CBHL Website Update, Celine Arseneault, 1  
Thank you, Joan DeFato, 8  
Help Wanted, Membership Committee  
-Barbara Pitschel, 7  
Call for Review of the Bylaws, John Reed, 7  
Help Wanted, *Newsletter* Columnist, Judith Reed, 7  
2003 Annual CBHL Literature Award, Kathy Allen 8  
Board of Directors Contact Information, 12  
Exhibit Notes, 13

### COLUMNS

From the President, Barbara Pitschel, 2  
Calendar of Events, Rita Hassert, 3  
Board Reports, Charlotte "Chuck" Tancin, 4  
Literature Reviews, Kathy Allen, 8  
Members' News West, Brian Thompson, 9  
Members' News East, Judy Warnement, 10  
On the Web, Stanley Johnston, 14  
Founders Fund Application, 15

## CBHL Membership Information

The *CBHL 2003 Dues Notice* has been mailed to members. Remember that dues paid in a timely fashion ensure a more accurate directory. If you did not receive your copy please contact Lisa DeCesare, Membership Manager, at: [<cbhl@oeb.harvard.edu>](mailto:cbhl@oeb.harvard.edu). For membership information or to report a change of address contact:

Lisa DeCesare, CBHL Membership Manager, Harvard University Botany Libraries, 22 Divinity Avenue, Cambridge, Massachusetts 02138; [<ldecesar@oeb.harvard.edu>](mailto:ldecesar@oeb.harvard.edu); Phone 617-496-1025 Fax 617-495-8654



*Visit the CBHL Website Today!*  
[www.ville.montreal.qc.ca/jardin/cbhl](http://www.ville.montreal.qc.ca/jardin/cbhl)



## From the President

BARBARA PITSCHEL, CBHL PRESIDENT  
HEAD LIBRARIAN  
STRYBING ARBORETUM & BOTANICAL GARDENS  
SAN FRANCISCO, CALIFORNIA

### Tax-Deductible Contributions To CBHL Founders' Fund Welcome!

If you are looking for a worthy cause to which you would like to dedicate a year-end tax-deductible gift of any amount, you need look no farther than the CBHL Founders' Fund Award endowment.

Due to the economy, CBHL is receiving a low return on its investments, which, of course, include our endowment funds. Endowments traditionally operate by leaving the principal invested to earn interest and freeing the interest to be spent on the designated work of the organization.

The CBHL Founders' Fund was instituted in 1991 to assist members who lack adequate institutional support to attend our annual meeting. At present, winners receive a \$500 cash award to assist with transportation, housing, and meals, and the registration fee is waived. CBHL compensates the meeting host for the cost of the registration. Any member in need of support may apply, and the winner is selected by blind lottery.

At present, the fund balance is slightly over \$13,000, earning interest at a rate of 3%. At 5% interest, a \$15,000 principal would generate \$750 per year, the approximate amount of the award, but we would need a fund balance of \$25,000 to generate \$750 at 3%. CBHL can and does supplement the award, as needed, from the general fund, but it is our goal to one day make our endowed awards self-supporting.

This is a threefold opportunity for you: With one check, you can help to build the Founders' Fund, make a holiday gift to CBHL, and give yourself the present of a tax deduction. Donations in any amount, large or small, will help. If you would like to make your charitable contribution in memory or in honor of someone special, that too is possible. Your generosity (and your honoree) will be acknowledged in the *Newsletter* unless you request anonymity.

Please send contributions to Mary Ellen Armentrout, CBHL Treasurer, 111 Reserve Circle, Wellington, Ohio 44090.

And thank you!

### Robert's Rules Of Order

The CBHL Board has chosen a book on parliamentary procedure that will be accepted as our authority and guide when issues of proper process arise. The version chosen is *Robert's Rules of Order: Simplified and Applied*, 2nd edition, by Robert McConnell Production, Indianapolis, Wiley Publishing, c2001 (Webster's New World) (ISBN 0764563998).

### CBHL Annual Meeting, New York, June 10-14, 2003

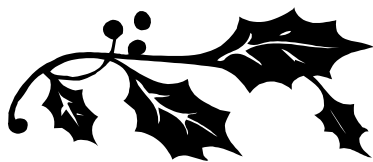
Mark your calendars for what promises to be one of the best CBHL conferences ever! The glimpses we were given during our New York Board visit were enticing, tantalizing, delicious! The evolving program will offer a wonderful mix of cutting-edge professional enhancement and spellbinding site visits. It's shaping up to be an event not to be missed. Plan ahead to attend this one! Preliminary announcements were mailed in late November.

### Longwood Graduate Program Public Horticulture Proposal

The Fellows in the Longwood Graduate Program, a masters program in public horticulture at the University of Delaware, completed a broad-based and thought-provoking report entitled *Developing a Vision for a Model Organization to Serve Public Horticulture in the United States*. Our discipline is certainly directly relevant to this proposed organization. If you are interested in reading more, check it out at [www.udel.edu/LongwoodGrad/groupproject2001.html](http://www.udel.edu/LongwoodGrad/groupproject2001.html).

## Founders' Fund Award - Apply Now

If you qualify, please apply for the award. **An application form is printed on page 15 of this newsletter and can be printed from the members only section of the CBHL website.** Remember that this award is not restricted to new, young, or student members, but is available to any member, including long-time active members, who currently lack institutional support to attend the annual meeting, many of whom pay their own way year after year. Applicants for this award fill out and submit a one-page form, which must be countersigned by the director of the institution for which the applicant works. The deadline for submission is January 31, 2003. In the case of multiple applicants, the winner is selected by blind lottery. The standing committee established to manage this award is the Board of Directors, chaired by the President.



*Happy holidays*



## Calendar of upcoming events

RITA HASSERT, TECHNICAL SERVICES LIBRARIAN  
STERLING MORTON LIBRARY, THE MORTON ARBORETUM  
LISLE, ILLINOIS



December 11, 2002. Satellite teleconference from 12:00–3:00 p.m. EST. “Safeguarding Our Patrons’ Privacy: What Every Librarian Needs to Know about the USA Patriot Act and Related Anti-Terrorism Measures.” Cosponsored by the ALA Washington Office, the

Association of Research Libraries, the American Association of Law Libraries, the Medical Library Association, and the Special Libraries Association. <http://www.arl.org/patriot/index.html>

January 24–29, 2003. Philadelphia. ALA Midwinter Meeting. <http://www.ala.org/events/midwinter2003/>

April 10–13, 2003. Charlotte, North Carolina. ACRL 11<sup>th</sup> National Conference. “Learning to Make a Difference.” <http://www.ala.org/acrl/charlotte/>

June 10-14, 2003. New York, New York. CBHL Annual Meeting. Hosted by New York Botanical Garden, The New York Horticultural Society, The Brooklyn Botanic Garden and Planting Fields Arboretum.

## CBHL Welcomes New EBHL Affiliate Members

**Gina Douglas**, Linnean Society of London, London, England UK, <[gina@linnean.org](mailto:gina@linnean.org)>

**Peter Hirsch**, ZE Botanischer Garten und Botanisches Museum der Freie Universität Berlin  
Berlin, Germany, <[p.hirsch@bgbm.org](mailto:p.hirsch@bgbm.org)>

**Antoine Jacobsohn**, Société nationale d’horticulture de France (SNHF) Paris, France, <[ib.cdi@snhf.org](mailto:ib.cdi@snhf.org)>

**Sally Walsh**, Dr. J.H.Burgoyne & Partners LLP, London, England UK, <[sally.walsh@burgoynes.com](mailto:sally.walsh@burgoynes.com)>

**Diny Winthagen**, Biologisch Centrum Anna’s Hoeve, Amsterdam, the Netherlands, <[winthagen@science.uva.nl](mailto:winthagen@science.uva.nl)>

**Julius W. Steiner**, Asher @ Co, NL 1970 AG IJmuiden, the Netherlands, <[jwsteiner@asherbooks.com](mailto:jwsteiner@asherbooks.com)>

**Pelly Koeltz**, Koeltz Scientific Books, Koenigstein Germany, <http://www.koeltz.com>

**Ronald Viane**, KMLP Gentse Floraliën. Gent, Belgium  
<[ronnie.viane@rug.ac.be](mailto:ronnie.viane@rug.ac.be)>

## CBHL Member Mary Walker Honored...

COMPILED BY JUDY WARNEMENT  
LIBRARIAN, HARVARD UNIVERSITY BOTANY LIBRARIES  
CAMBRIDGE, MASSACHUSETTS

Mary Walker has been a CBHL member for many years. Our more senior CBHL members will remember Mary as the volunteer librarian at the New England Wild Flower Society until her retirement in the mid ‘90’s. Typical of all good botanists, retirement merely meant that Mary refocused her botanical interests from New England to the Caribbean island of Anguilla where she and her husband have wintered since 1987.

Camera in hand, Mary began to photograph and collect the local flora. Her “hobby” evolved into a collection of specimens and a small reference library. Over the years Mary sought and received expert advice on plant identification from colleagues that included Harvard’s Richard A. Howard. Mary’s work culminated in the creation of the Anguilla Flora Project and she also designed the Flora Anguilla database.

Fifteen years later Mary has amassed more than 900 specimens now housed by the Anguilla National Trust (<http://web.ai/ant/index.html>). The herbarium provides a record of local plants and serves as a reference collection to identify plants and for teaching purposes. There are subsets of medicinal, wetland and edible plants and the database includes statistics and a list of special plants with locality information.

On February 22, 2002, a ceremony chaired by Anguillan naturalist, Oliver Hodge, was held on the grounds of the General Post Office to recognize Mary’s contribution to Anguillan botany. The Anguilla Beautification Club organized the event and guests included Government officials, the Executive Director of the Anguillan National Trust and local residents interested in the island’s flora and fauna and conservation issues. In addition to being lauded for her work, Mary was presented with a plaque and a photograph of herself at work in the field. It was also announced that a permanent commemorative plaque would be constructed on the Post Office grounds acknowledging Mary’s work and that a copy of the same photograph would be given to the National Trust for display.

Mary expressed her thanks and appreciation as well as her love for the island and people of Anguilla. She gave credit to Oliver Hodge for his expertise and support. Mary was then invited to plant a tamarind tree near the road to the Secretariat on the Post Office Grounds.

Mary’s career and contributions to botany and botanical libraries is a source of inspiration to all CBHL members.

Sources:

The Daily Herald, Sat., Feb. 23, 2002  
The Anguillian, Fri., Mar. 1, 2002.

## Board Report

CHARLOTTE "CHUCK" TANCIN, CBHL SECRETARY  
LIBRARIAN, THE HUNT INSTITUTE FOR BOTANICAL  
DOCUMENTATION, PITTSBURGH, PENNSYLVANIA

Report of midyear Board meeting in New York, Nov. 8-9, 2002,  
by CBHL Secretary Charlotte Tancin

The Board held its midyear meeting at the Horticultural Society of New York in Manhattan on November 9, 2002. The meeting opened at 9:22 a.m. and all Board members were present: President Barbara Pitschel, 1st Vice-President Judy Warnement, 2nd Vice-President Laurie Hannah, Past President Susan Fugate, Treasurer Mary Ellen Armentrout and Secretary Charlotte (Chuck) Tancin. Full minutes of the meeting will be posted on the members-only pages of the CBHL website at <http://huntbot.andrew.cmu.edu/CBHL/CBHLInfoCtr/CBHL-091102.html>.

**Secretary's report** - Chuck Tancin reported that the members-only pages of the website were updated recently, and she distributed notes on proposed revisions to the Board procedure manual for Board review.

**Treasurer's report** - Mary Ellen Armentrout gave an update on our accounts and then discussed the Long Award, noting that we're currently not earning enough in that fund to be able to give the award. The Board discussed strategies for increasing the amount in the fund, and agreed to solicit donations from members to increase funds for the Charles Robert Long Award, Founders Fund Travel Fellowship and the Annual Literature Award.

**2nd Vice-President's report** - Laurie Hannah has been getting the GAC directory updated and the information is being updated on the website at <http://huntbot.andrew.cmu.edu/CBHL/CBHLInfoCtr/CBHL-GACDir.html>. She sends the GAC policy out to new GAC members and is also working on the conservation column for the *Newsletter*.

**1st Vice-President's report** - Judy Warnement deferred her reports until the committee reports.

**President's report** - Barbara Pitschel noted that the Bylaws, Nominating, Annual Literature Award, Audit, and Charles Robert Long Award Committees are now filled, and questions about terms have been resolved. She will appoint a new member to the Charles Robert Long Award Committee to take office at the end of the 2003 annual meeting. She has also been working on various Membership Committee issues, including renewal letters and makeup of the committee. And she shared a letter with the Board that she received from the Longwood Graduate Program about a new professional organization they are hoping to create.

**Past President's report** - Susan Fugate deferred her reports until

the committee reports, and thanked Board members for their friendship and support in the past year.

### Committee reports:

[Note: Unless otherwise noted, reports are made by the Board liaisons who have received the reports in advance and usually by e-mail, from the committee chairs. As much as possible, reports are circulated among the Board prior to the meeting, in order to facilitate discussion.]

**Audit (Brad Lyon, chair)** - Mary Ellen noted that a Certified Public Accountant, Nicholas Bojevich, is performing a review of how bills are handled and how the books are processed; he will also set Mary Ellen up with Peachtree software. The review should be finished in the next week or so, and Mary Ellen will distribute copies to the Board.

**Founders Fund (Barbara Pitschel, chair)** - Barbara introduced some questions about logistics of advertising the availability of the award this year; discussion was set aside until later in the day.

**Charles Robert Long Award (Jane Cole, chair)** - Barbara will appoint a new member of the committee in June, replacing Jane Cole whose term ends then. It was agreed that the committee should meet during the annual meeting, to give the new member and the new liaison a chance to talk with the other committee members.

**Nominating (Susan Fugate, chair)** - Susan listed the committee members: Mindy Bodenhamer, Nadia Aufderheide, Celine Arseneault, and herself as chair. They have compiled a list of potential candidates and will begin contacting them soon.

**Publications (Judy Reed, chair)** - Mary Ellen noted that the committee is instituting a new quarterly publication schedule for the *Newsletter*, with deadlines set at 10/15 (except this year, 11/15), 1/15, 4/15, 7/15. Judy Warnement is working on getting an ISSN number for the *Newsletter*. Mary Ellen said that the *Newsletter* uses most of our budget.

**Committee on Committees (COC) (David Lane, chair)** - Chuck reported that the COC is processing strategic planning implementation worksheets from the most recent annual meeting, and continues to distill working notes from the long-range plan. The COC has recommended to the Board a procedure for electing committee chairs. The list of members of all committees is being updated. And the COC continues to serve as a forum for discussion.

**Electronic Communications (Stan Johnston, chair)** - Chuck reported that the website transition is proceeding smoothly, and the logistics of providing the *Newsletter* on the website are being explored. The online distribution list, managed by Bernadette Callery, is running smoothly, and Chuck is still maintaining the members-only pages of the website until webmaster Celine Arseneault is



ready to take them over. Stan is in the process of updating the list of committee members. The Board discussed the idea of encouraging all CBHL members to run anti-virus software.

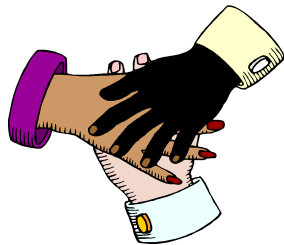
**Annual Literature Award (Kathy Allen, chair)** - Susan reported that the committee received 17 nominations for consideration for the award this year. She also noted that fewer publishers submitted lists for consideration this year. The Board discussed ways to encourage more members to nominate works, including ways to further streamline the nomination process.

**Membership (Kathy Fescemyer, chair)** - Judy reported that Kathy is working on updating the list of committee members and is looking for some new members. A "buddy program" was introduced last year to orient first-time attendees at annual meetings.

Membership Manager Lisa DeCesare provided current membership statistics:

Yearly statistics:

- 68 Individual Active members
- 141 Institutional Active members (this is the number of persons, NOT institutions)
- 27 Retiree Active members
- 7 Student Active members
- 243 Active members total



Other statistics

- 25 CBHL members who joined EBHL
- 8 new affiliate members from EBHL
- 7 lifetime members
- 1 complimentary membership (AABGA)
- 33 new members (2002) (includes 8 EBHL affiliate members)
- 48 members who did not renew in 2002
- 31 non-US members (includes 8 EBHL affiliate members)

Topics discussed included ways to implement the buddy system, the importance of documenting the new membership processes in the procedure manual, setting dates for renewals and new memberships to have them count for the current year, and whether this committee should be a standing committee. **Regarding the membership year, the Board unanimously passed a resolution:**

- Resolved, that the period of membership in the Council on Botanical and Horticultural Libraries is January 1 to December 31;
- that renewal forms are to be sent out in November for the following calendar year;
- that dues must be received by March 31st for inclusion in the membership directory;
- and that dues received after September 30th will be applied to the next calendar year.

**Preservation and Access (Don Wheeler, chair)** - Judy reported that Don has submitted his resignation as chair, and so the committee needs to select a new chair. The committee has completed one in a series of surveys of non-book collections in member li-

braries, is ready to send out a second, and has two more under development. Committee goals include completing the series of surveys and compiling the results into a directory or union list for the use of CBHL members.

**Public Relations (Rita Hassert, chair)** - Laurie reported that the committee will revise the membership brochure, in consultation with the Publications Committee and the Board. They will also send out press releases advertising the upcoming annual meeting. The Board discussed production and distribution of the brochures.

**Resource Sharing (Kathleen Fisher, chair)** - Laurie reported that committee members have identified a list of action items with a timeframe for completion, and they are beginning to work on them. Also, the Publication Committee is seeking a new columnist for the *Newsletter*. This individual would solicit articles about individual libraries. The Resource Sharing Committee is discussing how they might help to identify such libraries or how else they might assist this effort.

**Bylaws (John Reed, chair)** - Barbara reported on the formation of this new ad hoc committee, and the Board discussed the proposed committee charge:

- (1) Review the existing CBHL bylaws and recommend revisions, taking into account the strategic plan; the procedures manual; recommendations from the Board, Committee on Committees members, and the general membership; and examination of bylaws from other comparable volunteer organizations.
- (2) Recommend appropriate level of generality/specificity to firmly guide CBHL into the future without restricting appropriate change; clarify distinctions between bylaws and procedures.
- (3) Prepare a draft for distribution to and discussion by the membership, revise draft based on subsequent input, and bring back to membership for a vote.

**TIMELINE:** The goal is to present a draft at the June 2003 CBHL annual meeting and to ask for a vote of the membership on the revised bylaws at the 2004 annual meeting.

Following up on discussion at the April 2002 business meeting, **the Board unanimously passed the following resolution:**

Because CBHL is in the process of implementing the strategic plan its members created and voted to adopt, because in some instances the existing bylaws contradict some of CBHL's standard operating procedures and hinder implementation of the accepted plan, and because a new ad-hoc Bylaws Committee has been appointed and is working to clear up these discrepancies and to recommend revised bylaws and procedures that more closely meet CBHL needs, the CBHL Board of Directors officially resolves, for this interim period, to authorize setting aside those portions of the existing bylaws whose wording impedes the agreed-upon ongoing work of the organization.

It had been previously arranged that John Reed would meet with the Board later in the afternoon to discuss these and other issues relating to the Bylaws Committee.

## Board Reports, cont.

### Other business:

**2003 Annual Meeting** - After lunch, the group was joined by 2003 annual meeting hosts Pat Jonas, Katherine Powis and John Reed. They gave us an impressive update on meeting plans, including logistics, field trips, along with a detailed schedule. There was some discussion about scheduling business meetings and committee meetings, and John will ask Committee on Committees chair David Lane if the COC would help to develop a committee meeting schedule. The hosts were commended on their thorough planning and on the quality of the programs being lined up for the meeting.

**Bylaws Committee, again** - After the annual meeting discussion was finished, John remained with the Board for awhile to talk about the new Bylaws Committee. He accepted the committee charge drafted by Barbara and approved by the Board, and took copies of comments on the current bylaws from Judy and Chuck. He distributed copies of the bylaws of the Guild of Book Workers to show a possible model to consider, noting that they print their bylaws in the membership directory every year. After this discussion, John left and the Board meeting resumed.

### Old and new business:

1.) A proposed new membership category for commercial members was discussed. After considerable discussion of costs and benefits, the Board agreed to suggest \$125/year dues for commercial members allowing for one representative, with yearly benefits including one free set of mailing labels, a web link on the public pages of the CBHL website, a listing or business card sized announcement in the *Newsletter*, business address and URL listed in the directory, and the authorization to post commercial announcements on the online distribution list. This will now go for review to the various committees involved.

2.) There is general agreement on the Board that official CBHL correspondence that goes out from committees needs to be reviewed and approved by the Board, as we want to be sure that CBHL is being appropriately represented and that text of letters contains consistent and authoritative information. **A resolution was passed unanimously:**

Resolved, that all formal correspondence be submitted to the Board for review, and any revisions suggested by the Board be incorporated into the final text.

3.) There was some discussion of archiving and posting Board resolutions. A separate page for these will be put onto the members-only section of the website, and they will also be incorporated into the procedure manual.

4.) Regarding the upcoming EBHL meeting, as yet we have no volunteer from CBHL to represent CBHL at the 2003 EBHL meeting.

5.) There was some discussion of what happens if a committee has no chair. This will be pursued later, and also in discussions with the COC.

6.) There had been a lingering old business item regarding special interest groups or round tables, which CBHL currently does not have. While such groups could result in additional meeting programs or *Newsletter* content, the topic has been tabled for the present.

7.) Mary Ellen has purchased 7 copies of Webster's *New World Robert's Rules of Order, Simplified and Applied*, 2nd ed., Indianapolis, Wiley, 2001, for the Board and for the use of a parliamentarian.

8.) Discussion of possible revisions to the procedure manual and the list of Board duties followed. A revised list of duties from David Lane was reviewed and updated. Chuck will follow up with the Board on these and the proposed procedure manual revisions.

9.) Annual meeting evaluation forms were discussed, as were ways to get more feedback. Also, a change in procedure was agreed upon, and meeting evaluation forms will now be handled by the 2nd Vice-President.

10.) The GAC is now a user group, not a committee or a subcommittee; the revised bylaws should reflect this additional category somehow.

The meeting was adjourned at 5:08 p.m.



## CBHL Welcomes New Members

Suzanne Myrick, student member, Brooklyn, New York  
<smyrk@nyc.rr.com>

Bob Brucia, Placerville, California

Please note: directory corrections

Rebecca Eldridge e-mail: eldridgej@cox.net

## Help Wanted!

### Membership Committee

BARBARA PITSCHEL, CBHL PRESIDENT  
HEAD LIBRARIAN  
STRYBING ARBORETUM & BOTANICAL GARDENS  
SAN FRANCISCO, CALIFORNIA

I warned you in my last plea for helpers that you would soon have another CBHL volunteer opportunity. Well, soon is now! Those few of you who probably read the "President's message" through to its conclusion on page 14 of the September Newsletter already know that the CBHL Membership Committee needs your help. I repeat my persuasive appeal here: "Remember when you first joined CBHL and you wanted to find out more about how our organization worked, to get to know some of the people better, and to enhance contacts with others who were grappling with problems similar to your own? Wouldn't you welcome the chance to help folks who are searching for or just beginning to connect to the CBHL experience? CBHL needs volunteers like you to be part of its membership committee to welcome and orient new members and to extend outreach to people who haven't found us yet."

Seriously, folks, we need two or three members who are willing to work with the membership committee (1) to figure out the best ways to serve the needs of our existing members, and (2) to get the word out to other colleagues who would benefit from knowing about and being part of the collective strength of our group. And it also would be nice to see our membership numbers grow a little larger each year for a while instead of remaining so stable. The only requirements are a little time, a lot of enthusiasm, some creative ideas, and a belief that CBHL is worthwhile. I'll bet you qualify!

Please get back to Membership Committee Chair Kathy Fescemyer <kaf12@psulias.psu.edu> or reply to me expressing your willingness to help out!

And thanks... You're a great group and you always come through!  
Barbara M. Pitschel, CBHL President 2002-2003

## Call For Review of the Bylaws

JOHN REED, DIRECTOR  
LEESTHER T. MERTZ LIBRARY, NEW YORK BOTANICAL GARDEN  
BRONX, NEW YORK

A special committee to review and make recommendations concerning changes/revisions of the CBHL Bylaws was created this past summer. The Committee consists of: Donna Herendeen (National Agricultural Library), David Lane (University of New Hampshire), Barbara Pitschel (Strybing Arboretum & Botanical Gardens) John Reed, chairman (New York Botanical Garden) and Connie Wolf (Missouri Botanical Garden). The committee charge is 1) to review the existing CBHL bylaws and recommend revisions, taking into account the strategic plan; the procedures manual; recommendations from the Board, the Committee on Committees members, and the general membership; and to examine examples of bylaws of other comparable volunteer organizations; 2) to recommend appropriate levels of generality/specificity to firmly guide CBHL into the future without restricting appropriate change and to clarify distinctions between bylaws and procedures; and 3) to prepare a draft for distribution to and discussion by the membership, to revise the draft based on subsequent input, and to bring a revised draft back to the membership for a vote.

The goal of the Committee is to have the first draft ready for discussion at the June 2003 CBHL Annual Meeting in New York, with final approval on or before the 2004 Annual Meeting.

The Committee is now requesting input from the membership concerning the bylaws. The existing bylaws can be found on the "members only" section of the CBHL Web page. Please read these and send your comments, criticisms, concerns and recommendations to John Reed, either by mail or e-mail <jfreed@nybg.org> before January 15, 2003. If for any reason you cannot view the bylaws on the CBHL Web site, please contact John Reed and he will send a copy.



## Help Wanted! CBHL Newsletter Columnist

JUDITH REED, PUBLICATIONS COMMITTEE CHAIR  
CONSERVATION LIBRARIAN, RETIRED  
NEW YORK BOTANICAL GARDEN, BRONX, NY

In response to growing demand for sharing information about member libraries and their unique resources and services, we are seeking a new columnist. This columnist would receive and do general editing of articles written and submitted by CBHL members.

Other columnist responsibilities would include: 1) Provide ideas for the article and/or solicit articles; 2) Serve as Publications Committee liaison with the person submitting the article; 3) Do the final edit of the article.

The column on member libraries will appear twice a year and be approximately 2 pages in length. This is a great opportunity to learn more about fellow member libraries and add value to our publication. If you are interested in volunteering for this position, please contact Judy Reed, Publications Chair at <jreed@bestweb.net>.

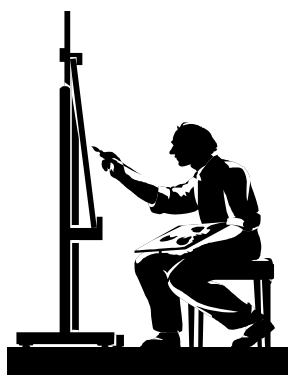
## Literature Reviews

KATHERINE ALLEN  
REFERENCE LIBRARIAN-BIBLIOGRAPHER  
MAGRATH LIBRARY  
UNIVERSITY OF MINNESOTA, ST. PAUL, MINNESOTA

***Anne Ophelia Todd Dowden: A Blossom On The Bough: Catalogue Of An Exhibition, 19 September 2002 Through 28 February 2003 / Anne Ophelia Todd Dowden; James J. White; Lugene B. Bruno. Pittsburgh, Pa.: Carnegie Mellon University, Hunt Institute for Botanical Documentation, 2002. 48 p.***

What a pleasure to relax for an evening and peruse this wonderful catalogue cover-to-cover! James J. White writes in the preface, "Considering Anne Ophelia's outstanding career and distinguished work, she must be recognized as one of, if not *the*, country's leading botanical artists. ... This exhibition pays tribute to a remarkable lady and her legacy on her 95<sup>th</sup> birthday (17 September 2002)."

An autobiographical sketch and several family photos give us a glimpse of Anne Ophelia's personality and work life. Reproductions of several paintings, side by side with quotations from the artist's correspondence, make up the heart of the book. It concludes with a catalog of the works in this exhibit, a list of Mrs. Dowden's past exhibitions, and a bibliography of her work.



This exhibition catalogue pays tribute to an outstanding artist and her work with its faithful reproduction of her lifelike paintings, interspersed with quotations that reveal her down-to-earth nature, sense of humor, and devotion to her work. "At last my axe is falling on you. I always say that no friend of mine is ever safe from an SOS asking for a specimen of a local plant!" writes Anne Ophelia to a University of Minnesota professor. "The darn roses are complicated to draw and they have me in a constant nervous tizzy because they won't hold still—so fragile." "So now I'll start painting—always the dessert." "I've finally come up for air after several days with the delightful cowslips." It is as if Anne Ophelia is attending the exhibition with you, offering background and anecdotes, as you roam from painting to painting.

Many of these stunning paintings are intended to be educational and illustrate various parts of a plant. They were done for a wide range of articles and books, many of which Mrs. Dowden wrote as well as illustrated. These include *The Secret Life of the Flowers* (1964), *The Blossom on the Bough: A Book of Trees* (1975), *State Flowers* (1978), *The Clover and the Bee: A Book of Pollination* (1990), and *Poisons in Our Path: Plants that Harm and Heal* (1994).

I commend James J. White and Lugene B. Bruno on both the layout and content of the catalogue.

## With Thanks. . .

Dear Colleagues,

Although it has taken me awhile to express my thanks for the Charles Robert Long Award to the CBHL members who were not in San Francisco, it does give me the opportunity to mention the "stone in the pond" ripple effect. The first thing was that the award received a lot of attention here at the Arboretum. Then, through the efforts of Rita's committee and our communications people, the announcement about the award was published in local papers and newsletters. With each publication, a different group of people stopped in my office or sent notes to congratulate me and to say how much I had helped them over the years.

While that was quite gratifying, it did not equal the original honor of receiving the award from my peers. Finally, I received a scroll from the County Supervisor of our district. You should be happy to know that the scroll actually mentions CBHL and your award and then adds service to Los Angeles County.

While you might find somebody more deserving of the award, you won't find anybody more appreciative of it.

Sincerely,  
Joan DeFato

Plant Science Library  
The Arboretum of Los Angeles County  
301 North Baldwin Avenue  
Arcadia, CA 91007-2697  
Phone: (626) 821-3213 Fax: (626) 445-1217  
[www.arboretum.org](http://www.arboretum.org)

## 2003 CBHL Annual Literature Award

KATHERINE ALLEN  
REFERENCE LIBRARIAN-BIBLIOGRAPHER  
MAGRATH LIBRARY  
UNIVERSITY OF MINNESOTA, ST. PAUL, MINNESOTA

The list of **CBHL 2003 Literature Award** nominees is now on the web site at <http://www.ville.montreal.qc.ca/jardin/cbhl/cbhl.htm>.

It is a fine selection of books! Hearty thanks to our colleagues who took the time to nominate these works. Check out the list for the best of recent horticultural & botanical literature.

## CBHL Members' News West

COMPILED BY BRIAN THOMPSON  
LIBRARIAN, SYSTEMS & TECHNICAL SERVICES  
MILLER LIBRARY, CENTER FOR URBAN HORTICULTURE  
UNIVERSITY OF WASHINGTON, SEATTLE, WASHINGTON

**Janice Dodd** of the **Berry Botanic Garden**, announces the Rae Selling Berry Garden and House is going to be listed on the National Register of Historic Places. They were approached about a year ago by one of the staffers in the state office who was intrigued by the garden and Rae Berry and volunteered to write the nomination with Janice's help. Janice is glad the archives were somewhat organized as they came in handy documenting Rae Berry's history. It is a "type b" designation, which nominates a place as related to a person and the significance of their work within a particular field, i.e., horticulture. It will take a couple months before it becomes official via the "keeper" in Washington D.C, a great way to cap off the Berry Botanic Garden's 25th year.

**Laurie Hannah** at Santa Barbara Botanic Garden reports that she has replaced **Susan Eubank** on the Annual Book Award Committee of the American Horticultural Society (AHS). The Committee reviews all American gardening and horticulture books published each year and selects the best new books to receive the AHS Annual Book Award.

From **Joan DeFato** at the Arboretum of Los Angeles County: In October I went to the Northeast on vacation that now feels like the dim past. The trip was wonderfully varied and relaxing. On a one-day jaunt to Washington, DC, I had lunch with **Ruth Schallert** at the Smithsonian, took a quick look at the US Botanic Garden Conservatory, saw an Egyptian exhibit at the National Gallery of Art and visited the Viet Nam Memorial, all courtesy of my nephew as chauffeur. Next I went to Cape Cod for a reunion with two other former employees of Boyce Thompson Institute (when it was in Yonkers). Back on Long Island, I went to a high school reunion, visited with family, helped sew a cape, weeded and vegetated. I experienced rain, sun, wind, colorful maples in mid Connecticut and almost colorful oaks as I rode to the airport to return to California. A delightful interlude.

From **Jane Cole**, Paradise Valley, Arizona: Bruce and I have received news, as you probably have also, that Rod and Rachel Saunders have bought **Walter** and **Ruth Middlemann's** Honingklip Book Sales in South Africa. The new company is called Silverhill Seeds, South African Seed Specialists. The Saunders plan to publish a new book list of botanical books about the Southern African flora in early January 2003. Anyone interested in being on the mailing list should contact the Saunders at PO Box 53108, Kenilworth, 7745 Cape Town, South Africa or by email <rachel@silverhillseeds.co.za>. For more information, there is also a website [www.silverhillseeds.co.za](http://www.silverhillseeds.co.za)

From **Valerie Easton**, Elisabeth C. Miller Library: I want to let all of my CBHL colleagues know that I've resigned my job here at the Miller Library, effective the end of November. I leave with great regret after 18 years, but I'm very ready for a change, and look forward to concentrating on my writing. I'm now writing a weekly garden column for the *Seattle Times*, am a contributing editor for *Horticulture* magazine and a regional editor for *Country Gardens*, as well as writing for on-line journals, *Gardens Illustrated*, and working on my third book. It will be a pleasure to have time to enjoy these projects, rather than rush through them.



It has been a difficult 17 months here since the library burned, but I feel we're back on a pretty good footing. We're running a small library out of another building here at CUH, and we've raised enough money to significantly expand the new library (completion date is June, 2004). A local support organization pledged to raise \$200,000 for furnishings and equipment. All is in place for a wonderful new library.

**Brian Thompson** will manage the library for the next year or so, and then, when the new building is closer to completion, the Center for Urban Horticulture (CUH) will do a nationwide search for a new librarian. I'm sure Brian will be encouraged to apply if he is interested in the job after trying it out for a while. If you're interested in moving to Seattle – watch the job listings in a year or so. The plan is to post the Managing Librarian job when the new library is well underway, probably next winter, and I've been asked to be part of the search committee.



Some of my fondest memories of this job are from hosting the CBHL Conference in 1993, attending other fun and productive conferences around the country, and getting to know many of you. I've gained much wisdom and support from my contacts in CBHL – the organization is an invaluable connective link for all of us. For those of you who visited here in 1993, and would like an update: My daughter Katie graduated from architecture school last June, and is now working for an architecture firm here in Seattle, planning on going back to school for her masters in a year or two – or so I keep reminding her. Mostly she is enjoying working and living downtown. My son Spencer, who was only 7 when you came to Seattle, is a junior in high school, beginning to plan where he wants to go to college. He is a great reader, an editor of his school literary magazine, and loves his job as a page at a local library – the same way I started out in libraries 34 years ago.



I'm here at CUH through the end of November, and can then be contacted at my home email at <vjeaston@aol.com>

Best wishes and fond thanks,  
Val Easton

## CBHL Members' News East

COMPILED BY JUDY WARNEMENT  
LIBRARIAN, HARVARD UNIVERSITY BOTANY LIBRARIES  
CAMBRIDGE, MASSACHUSETTS

In June, 2002, long-time CBHL member, librarian and book collector, **Elizabeth Kals Reilley** donated her collection of over 400 important books and prints documenting the developing history of European gardens and designed landscapes to **The LuEsther T. Mertz Library**. Elizabeth Reilley started the library at Planting Fields Arboretum in 1979 and remained the librarian there until last year. She was active in the Horticultural Society of New York, the Garden History Society, and the Congress of International Bibliophiles, and in 1977 became one of the first women admitted to the Grolier Club. She began building her remarkable collection of important publications related to landscape design from the seventeenth century to the nineteenth century in the early 1960s. It is an extraordinary addition to the Library's holdings, the most important private collection to be added to the Library in many decades.

A major exhibition of the Reilley collection, entitled *Scenes of Magnificence and Nature: Rare Garden Books from the Elizabeth Kals Reilley Collection*, curated by Elizabeth Eustis, historian of garden design and prints, will open for public viewing on May 2, 2003. It will be open for viewing by CBHL members attending the Annual Meeting in New York in June. A full catalogue for this exhibition will also be available.

The **NYBG Library's Conservation Department**, under the direction of **Olga Marder**, is presently managing three project grants: two focus on the continuing project of inventorying, stabilizing and rehousing the Garden's collection of botanical art and illustration, and the third provides funding for the conservation of 19<sup>th</sup> century illustrated folios. The Institute of Museum and Library Services awarded a one-year grant of \$50,000 for the botanical art and illustration project, enabling the Library to hire a full-time conservation technician, Nicole Scholtz, for a year. A grant of \$15,000 from The Samuel H. Kress Foundation provides a partial match for the IMLS grant. It specifically provides support for a paper conservation intern to work on the project. Amy Junker, who recently received a post graduate degree in paper conservation from the Camberwell College of Arts in London was chosen as the intern and began her work in September.

In August the Library received notification that it was recipient of a grant of \$29,335 from the New York State Conservation/Preservation Program for the conservation treatment of three folio titles:

James Bateman's *The Orchidaceae of Mexico and Guatemala*. [1837-1843].

William Roxburgh's *Plants of the coast of Coromandel*...3 vols, 1795-1819.

Robert John Thornton's *New illustration of the sexual system of Carolus von Linnaeus*... 3 vols., 1807.

The NYBG Library's pilot digital library project is close to completion and is available online at <http://www.nybg.org/bsci/rolen/page1.html>, by clicking on "Digital Library" from the "Collection" page of the Library's Web-site: [www.nybg.org/bsci/libr/collect.html](http://www.nybg.org/bsci/libr/collect.html), or by clicking on the specific URL from the bibliographic record in CATALPA. Two titles by François André Michaux: *Histoire des arbres forestiers de l'Amerique septentrionale*... (3 vols.) Paris, 1810-1813 and the English translation *North American Sylva*... (3 vols.) Philadelphia, 1817-1819 are both on line. A third title: André Michaux's *Flora boreali-americana*... (2 vols) Paris, 1803 will be available by late December. The electronic versions of the works feature updated plant names and full-text searching, as well as color images of each page, including the beautifully illustrated hand-colored plates, many of which showcase the talents of Pierre Joseph Redouté and Pancrace Bessa. This digitization project has been carried out with funding by the Andrew W. Mellon Foundation.

The Library is continuing its work with ImageWare, a German-based manufacturer of overhead book scanners. Currently the Library is testing two overhead book scanners, a grayscale model versus a color scanner. Testing will continue through December 2002. The Library is using the scanners to fulfill patron requests for reproductions from folios as well as fragile materials that were previously restricted from being photocopied.

Please direct questions or comments concerning the new digital library resources or tools to **Heather Rolen**, Digital Library Specialist at The LuEsther T. Mertz Library <[hrolen@nybg.org](mailto:hrolen@nybg.org)>.

From **Patricia Jonas**, Director of Library Services, Brooklyn Botanic Garden: You will meet her in person at CBHL in June, but I want to introduce our new Technical Services Librarian, **Kathy Crosby**. She comes to us from the Seymour J. Phillips Health Sciences Library at Beth Israel Medical Center where she gained an impressive knowledge of SydneyPlus, the same automated library system we use. While she works through our seven month backlog of cataloging, she will also be developing some significant additions to our online catalog.

I also want to call everyone's attention to our Historic Image Collection online [www.bbg.org/hic](http://www.bbg.org/hic). I hope everyone will have an opportunity to glance at it. Some of the botanical portraits are of great beauty.

**James J. White**, Curator of Art at the **Hunt Institute for Botanical Documentation**, announces the availability of a database of institutional holdings of original art. The database is based on the survey distributed by James about seven years ago. You can search the database at : <http://huntbot.andrew.cmu.edu/>.

Look under "Databases," where the register of Original Botanical Art is the last one or go directly to

<http://huntbot.andrew.cmu.edu/HIBD/Departments/DB-INTRO/IntroOrigBot.shtml>

It will be updated regularly. Members are invited to read the Introduction and Search Tips to review the information about their institutions and artworks and to contact James as alterations are needed. James thanks everyone for their assistance.

The **Chicago Botanic Garden** has acquired thousands of rare books and journals from the **Massachusetts Horticultural Society**, Boston, Massachusetts, including first editions of Darwin's botanical works and a collection of botany, horticulture and gardening journals published in the 18<sup>th</sup> century.

Containing historical and scarce volumes dating back as far as the 1400s, the priceless collection includes 2,219 rare books and 2,000 journal titles. It significantly expands the size of the Garden's existing **June Price Reedy Horticultural Library**, which already holds more than 18,000 books on gardening, horticulture and botany; 400 journals; almost 2,000 rare books and journals; 200 videos; and thousands of nursery and seed catalogs.

In the 19<sup>th</sup> century, scholars saw this collection as the oldest, most complete and best-organized strictly horticultural library in the world. Thirty-percent of the collection's rare books have publication dates between 1400 and 1799; 60 percent of the books were published in the 19<sup>th</sup> century. Many of the books and journals in the collection are not available for study anywhere else in the Midwest, and are of limited access in a few academic and specialized libraries on the East Coast.

"This collection fits into the collections of area libraries, such as the Newberry, Morton Arboretum and the Field Museum of Natural History, as if it were a missing puzzle piece," said Larry DeBuhr, the Garden's vice president of education. "With this collection, Chicago libraries and libraries at the great universities of Chicago, Northwestern and Illinois, can proudly claim to have one of the strongest natural history book collections in the world."

For the past 25 years, the collection has been securely stored in a climate-controlled facility at the Massachusetts Horticultural Society and has received little handling. The rare books are stored on compact shelving, arranged by the Manks Classification system, with some titles cataloged electronically. The journal collection, also in good condition, is arranged by title, and is either bound or in original issues. The collection contains complete runs of *Garden* and *Horticulture* magazines and other important titles, including various reports and journals of horticultural and agricul-

tural societies in the United States and Europe.

The oldest book in the collection — published in Treviso, Italy in 1483 — is *De Historia Plantarum* by Theophrastus, who was Aristotle's favorite student and is often thought of as the father of botany. The book is the result of an order by Pope Nicholas V for a Latin translation of Theophrastus' manuscripts. The Garden's *De Historia Plantarum* is the only copy known to exist in the Midwest.

The Massachusetts Horticultural Society has held this collection since 1829, when the Society was founded and incorporated, and during a time when intellectual and cultural influences were at their peak in old New England. The Society, which has sold the collection to strengthen its endowment and cash reserves, was especially interested in having the Chicago Botanic Garden purchase this collection so that it would stay intact and available to researchers and the public. When collections like this are sold at auction, the books are often split up and the plates removed for eventual sale and display. Collections like this are rarely available for purchase.

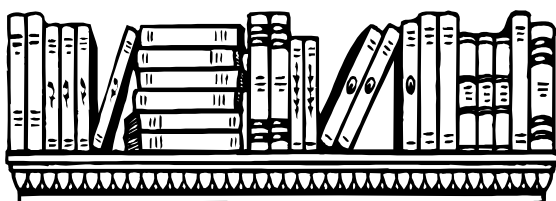
The original, manually printed and hand-colored plates in the Garden's collection are unique because such a small number of books were printed and many fewer still exist. For example, less than 300 of Basilius Besler's *Hortus Eystettensis* were printed in 1613. A handful of copies exist in the United States today and one is included in the Garden's collection.

Until the Garden's long-term physical plans can be realized to accommodate spacing for the complete collection, many books and journals will be warehoused. **Ed Valauskas**, manager of the Garden's June Price Reedy Horticultural Library, will lead a team of experts to process and restore the collection as necessary. Meanwhile, some of the best books and journals will be selected for ongoing public exhibition at the Garden.

"These books are like time machines," Valauskas said. "They take us back to ancient Greece and the first experimental gardens of Theophrastus, to the tulip experiments of Carolus Clusius in 17<sup>th</sup>-century Leiden in the Netherlands, to the first expeditions examining the flora of the New World in the 18<sup>th</sup> and 19<sup>th</sup> centuries. These books and journals inspired researchers and weekend gardeners over five centuries. This collection will provide inspiration in this new century, in ways we can only begin to imagine."

**Leora Siegel** also announces that the Chicago Botanic Garden Library web site is up and includes access to the CBG OPAC. The link is: [www.chicagobotanic.org/library](http://www.chicagobotanic.org/library)

Leora adds: "At the last CBHL conference in San Francisco at one of business meetings, I asked if anyone was aware of a library-for-sale because the CBG library might be interested in purchasing a collection. . . Many people have been hard at work for all these months to make this actually happen."



**John Flanagan** announces that the **Kew Library** Catalogue has gone live at: <http://www.kew.org/library/index.html> making information about Kew's collections available to a world-wide readership for the first time.

This unique resource currently holds more than 145,000 individual records, mostly for published material like monographs and pamphlets. About 700 of the ca. 4,000 periodical titles held at Kew have entries on the catalogue, mainly those acquired by purchase.

The catalogue has been created since 1991 using the Unicorn Collection Management System. The library's old catalogue cards were converted to electronic format by OCLC between 1992 and 1995, and since then we have continued to add new material at a rate of ca. 3,000 items per year. This resource will continue to grow, and there are plans to make the catalogue entries for the Archives and Illustrations Collections available at a later stage.

More recent additions to the catalogue include recommended Internet resources relating to botany, which can be viewed via hyperlink from within bibliographic records. Another key feature of this botanical gateway is the ability to search other libraries from within the catalogue itself. Live connections to the Library of Congress and the Natural History Museum, London, are already set up and links to further libraries with relevant collections will be added in the future.

If you have any questions or comments please contact **Gabriele Popp** at <[webcat@kew.org](mailto:webcat@kew.org)>

The **North Carolina State University Herbarium** (NCSC) is pleased to announce the release of a new online botanical publication - *Vulpia* (ISSN 1540-3599) - named in honor of the late Dr. William Basil Fox (1915-1952), first curator of NCSC.

Not wishing to duplicate existing journal coverage, *Vulpia* seeks primarily to provide useful scientific information often not published in existing journals for lack of resources or space - such as botanical keys to native and cultivated plants (in support of teaching and field work), detailed nomenclatural notes, discussions of synonymy and typification, floristic notes, and lengthy exsiccatae.

To facilitate cost-effective and broad distribution, the publication is made available online in the Adobe portable document format (pdf). Archival hardcopies and electronic media will be deposited at the library of North Carolina State University (Raleigh, NC).

All manuscripts will be reviewed by an editorial board. Contributors need not be associated with North Carolina State University. There are no page charges for authors.

Subscriptions are also free for the time being and will be managed through a list-serve. Persons subscribing to the publication will receive notification of new papers as they are released and a complete table of contents of the year's volume at the end of the calendar year. Volume 1 and subscription information can be found at: <http://www.vulpia.ncsu.edu>

**Judy Reed**, Publications Committee Chair, is pleased to announce

## CBHL Board of Directors

Barbara M. Pitschel, President, 2002-2003  
Head Librarian  
Helen Crocker Russell Library  
Strybing Arboretum Society  
9th Avenue at Lincoln Way  
San Francisco, California 94122  
<[bpitschel@strybing.org](mailto:bpitschel@strybing.org)>

Judith Warnement, First Vice-President  
Librarian  
Harvard University Botany Libraries  
22 Divinity Avenue  
Cambridge, Massachusetts 02138  
<[warnement@oeb.harvard.edu](mailto:warnement@oeb.harvard.edu)>

Laurie Hannah, Second Vice-President  
Librarian  
Santa Barbara Botanic Garden  
1212 Mission Canyon Road  
Santa Barbara, California 93015  
<[lhannah@sbbg.org](mailto:lhannah@sbbg.org)>

Susan Fugate, Past President  
Head, Special Collections  
National Agricultural Library  
Room 300, U.S. Department of Agriculture  
1301 Baltimore Avenue  
Beltsville, Maryland 20705-2351  
<[sfugate@nal.usda.gov](mailto:sfugate@nal.usda.gov)>

Charlotte 'Chuck' Tancin, Secretary  
Librarian  
Hunt Institute, Carnegie Mellon University  
5000 Forbes Avenue  
Pittsburgh, Pennsylvania 15213-3890  
<[ctancin@cmu.edu](mailto:ctancin@cmu.edu)>

Mary Ellen Armentrout, Treasurer  
Librarian  
Herrick Memorial Library  
101 Willard Memorial Square  
Wellington, Ohio 44090  
<[maryellenarm@msn.com](mailto:maryellenarm@msn.com)>

that **Shelly Kilroy**, Librarian at the **Frederik Meijer Gardens and Sculpture Park**, has volunteered to take over for **Judy Warnement** as the Members News East editor starting with in January of 2003. CBHL members east of the Mississippi and beyond should direct all news, information, announcements, tidbits and gossip to Shelly at: Frederik Meijer Gardens and Sculpture Park, 1000 E. Beltline NE, Grand Rapids, MI 49525 (616-975-3144); <skilroy@meijergardens.org>

The **Atlanta Botanical Garden** announces the Fuqua Orchid Center grand opening took place in March 2002. The Center contains formal, naturalistic, and high-elevation orchid display houses, conservation greenhouses, a classroom, tissue culture lab, and an orchid reference library. The Vaughn-Jordan Foundation sponsored this new library which opened with 1000 titles and 25 journals. The collection will support orchid and global plant conservation research.

Also, the **Sheffield Botanical Library** has been totally renovated, with the four-letter word "move" completed in September. Librarian **Lu Anne Schwarz** has just returned from an ecotourism adventure with ABG staff, volunteers, and members to Aquipucuna, Ecuador - a wonderful experience!

## Exhibit notes. . .

The University of Illinois at Urbana-Champaign sponsored the Evolution/Systematics conference June 29th-July 2nd. I was contacted by the library exhibit committee to see if the Illinois Natural History Survey was interested in running an exhibit in the main library concurrently with this conference. The space consisted of 6 display cases and a large billboard (6'x54') directly behind them. After consulting with the Illinois Natural History Survey (INHS) biological collections committee and Mike Jeffords everyone decided it was a workable project. A smaller committee was formed to work on the exhibit with myself as chair. We decided to highlight the INHS and its Biological collections. Everyone was assigned a display case and the corresponding area behind it. Each person was responsible for the exhibit materials in their area.

Mike Jeffords (education and outreach) designed the wall panels and we were able to use his work area to paint and mount the photos onto the foam board frames. Patty Dickerson (Mike's assistant), Yoojung Kim (library worker) and myself primarily did this work. The INHS also has a shop where we were able to cut and build the frames for the wall panels. James McNamara and Larry Gross cut all of the foam pieces for the wall panel photos. Loren Kirkwood (INHS graphic designer) designed the graphics and signs.

I also had to meet with the conference planners, professors May Berenbaum and Stewart Berlocher. They were designing other displays in the main library so we had to coordinate our subjects and design plans. After a lot of work by numerous people the exhibit went up June 11<sup>th</sup> and ran until October 16<sup>th</sup>. Photo's of the exhibit can be found at <http://www.library.uiuc.edu/nhx/libraryexhibit.htm>.

This was quite an undertaking but the results were well worth all of the effort. I have come to realize how fortunate I am to be working for an organization that has so many talented and dedicated people.

### -Beth Wohlgemuth

Illinois Natural History Survey librarian

On behalf of the **LuEsther T. Mertz Library, Susan Fraser** announces the opening, on November 15<sup>th</sup>, of an exhibition *Fruits and Flowers of Winter*, curated by CBHL members **Marie Long**, and **Stephen Sinon**, and Susan. The exhibition features items drawn from the Library's significant illustrated holdings of rare books, folios, manuscripts, and original artwork, from the 17<sup>th</sup> century to modern times. *Fruits and Flowers of Winter* will be exhibited from November 15<sup>th</sup> 2002 until February 16<sup>th</sup>, 2003, in the William D. Rondina and Giovanni Foroni LoFaro Gallery at The New York Botanical Garden.

Highlights include an 18th-century plantsman's ledger book, citing the first-known example of commercial storage of tender plants for the winter in New York; Jan van der Groen's *Den Nederlandtsen hovenier*, treatise of theory and practice in Dutch horticulture in the 17th century; superb 18th-century prints by Pierre Joseph Redouté; watercolors by the renowned botanical artist Anne Ophelia Dowden; and *A Selection of Hexandrian Plants*, a magnificent large folio by Priscilla Bury.

Themes include the mythological story of winter, overwintering of plants in orangeries and hothouses, winter horticulture in early New York, a walk through the garden in winter, and nursery and floral offerings. Beautifully illustrated examples include plants available in winter, both currently and historically, for economic and decorative purposes, and as part of the winter landscape. The images are in a variety of media, including hand-colored engravings, etchings, lithographs, and watercolors. The fruit and floral representations include the pomegranate, citrus, heath, cyclamen, amaryllis, holly, and hellebore.

The Exhibition is open daily from 10 a.m. to 5 p.m. Admission is free with Garden admission.

## CBHL Distribution List

Members are encouraged to use the distribution list to keep in touch and discuss aspects of library service as well as other topics of interest to all concerned with the literature of botany and horticulture. For more information contact Bernadette Callery in Pittsburgh at: <bcallery@flounder.com>.

## On the Web:

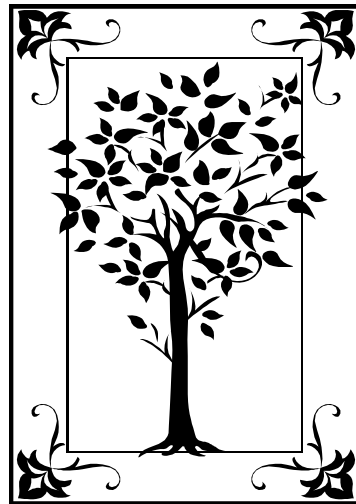
### A Database of Botanical Art, Giant Hogweed and the First Vienna Vegetable Orchestra

STANLEY JOHNSTON, CURATOR OF RARE BOOKS  
THE HOLDEN ARBORETUM  
KIRTLAND, OHIO

The CBHL Electronic List has been very busy in recent months bringing new web offerings to the attention of our members. Among the more important ones are several originating from member institutions. The Royal Botanic Gardens, Kew, has mounted a multiple database search engine called the *Kew electronic Plant Information Center (ePIC)* [www.kew.org/epic/](http://www.kew.org/epic/) which searches the *International Plant Name Index*, *Living Collections* database at Kew, *Kew Record of Taxonomic Literature*, and the *Survey of Economic Plants for Arid and Semi-Arid Lands*.



The Hunt Institute for Botanical Documentation has mounted a massive exhibit entitled *Order from Chaos: Linnaeus Disposes* which documents the pre-Linnaean attempts at botanical classification, the work of Linnaeus, its influence, and the effects it had in creating the modern taxonomic system, all supported by an abundance of handsome illustrations from the works discussed. It is perhaps most easily accessed through the *Hunt Institute: Online Exhibitions* page [huntbot.andrew.cmu.edu/HIBD/Exhibitions/Online.shtml](http://huntbot.andrew.cmu.edu/HIBD/Exhibitions/Online.shtml).



The Hunt is also responsible for putting up the *Register of Original Botanical Art* [128.2.21.109:2000/regart/regdefault.html](http://128.2.21.109:2000/regart/regdefault.html) a database of original art from around the world searchable by artist, holding institution (or location), and artwork. This may in time prove to be an indispensable tool for students of art history and botanical art, but for now it needs the help of our members, art museums, and museums of natural history to insure that information on their collections is submitted for inclusion in the database. It would also be helpful if the database of the Hunt's own holdings (currently available at: [128.2.21.109:2000/artcat/artsearch.html](http://128.2.21.109:2000/artcat/artsearch.html)) could also be integrated into the *Register*.

Other online reference resources include the British *Encyclopedia of Sustainable Development* [www.docm.mmu.ac.uk/aric/esd/](http://www.docm.mmu.ac.uk/aric/esd/) and the various subject dictionaries available at *Online Dictionary – Specialist Subject Dictionaries* [www.specialist-online-dictionary.com/](http://www.specialist-online-dictionary.com/).

Lichens and fungi provide several interesting links. *Lichens (All About)* [www.earthlife.net/lichens/intro.htm](http://www.earthlife.net/lichens/intro.htm) includes 23 images of lichens, a discussion of their role in ecology, links to lichen sites, and a selective lichen bibliography. *Kinoko-ya* [www.cx.sakura.ne.jp/~kinoko/01eng/0e\\_home.htm](http://www.cx.sakura.ne.jp/~kinoko/01eng/0e_home.htm) provides color images of over 120 Japanese fungi. While, on a more ominous note, *Toxic Black Mold Information Center* [www.toxic-black-mold-info.com/](http://www.toxic-black-mold-info.com/), posted by a health company, provides information on signs of mold, hiding mold, the health effects of mold, and mold cleaning and prevention.

While not as deadly, the Giant Hogweed is equally invasive and has sap which can make skin sensitive to light and subject to severe blisters. This provides the subject matter of the state of Washington's *Information About Giant Hogweed* [www.wa.gov/agr/weedboard/weed\\_info/hogweed.html](http://www.wa.gov/agr/weedboard/weed_info/hogweed.html) and Britain's *The Giant Hogweed Page* [www.bath.ac.uk/~bssnrw/hogweed.html](http://www.bath.ac.uk/~bssnrw/hogweed.html).

While the invasive Hogweed is something to be eliminated, *The Red List of Endangered Species* [www.redlist.org](http://www.redlist.org) provides a database approach to the 2002 listing of threatened plants and animals which need to be preserved.

*Tree Guide* [www.enature.com/guides/select\\_Trees.asp](http://www.enature.com/guides/select_Trees.asp) provides a guide in the form of a database searchable by leaf type or plant name complete with leaf and branch images, descriptions, information on habitat and range as well as a general discussion of each species. The site is also linked to a guide to *Native Plants* [www.enature.com/guides/select\\_LBJNative.asp](http://www.enature.com/guides/select_LBJNative.asp) searchable by plant form, which is actually provided courtesy of the Lady Bird Johnson Wildflower Center.

The web has long been a source for people to interact and exchange information through forums and bulletin board. Although *The Garden Web Forums* [forums.gardenweb.com/forums/](http://forums.gardenweb.com/forums/) have been around for a long time, for those who haven't visited them in the last year or two, they may be worth re-visiting – if only to see how the number of specialized horticultural discussion groups has multiplied..

We conclude with one of the more unusual blendings of botany and art with the page of *The First Vienna Vegetable Orchestra* [www.gemueseorchester.org/anfang\\_e.htm](http://www.gemueseorchester.org/anfang_e.htm) featuring images of the vegetable and kitchen instruments used by the group, information on their appearances, and online samples of their music.



**APPLICATION FOR THE  
COUNCIL ON BOTANICAL AND HORTICULTURAL LIBRARIES (CBHL)  
FOUNDERS' FUND TRAVEL FELLOWSHIP AWARD**

The purpose of the Founders' Fund Travel Fellowship is to provide limited financial support to assist one qualified applicant per year in attending the annual meeting. Should more than one applicant qualify to receive the award, the recipient will be selected by blind lottery. Fellowships are given on a one-time only basis, and recipients may not apply again. The amount of the award is \$500.00, plus the meeting registration fee will be waived. Established in 1991, the Founders' Fund Travel Fellowship is a memorial to deceased CBHL members.

**To:** Board of Directors, Council on Botanical and Horticultural Libraries, Inc.

**From:** \_\_\_\_\_

**Subject:** Application for CBHL Founders' Fund Travel Fellowship Award

---

I am a member of the Council on Botanical and Horticultural Libraries (CBHL).

I would like to attend the upcoming CBHL Annual Meeting being hosted by the New York Botanical Garden, Brooklyn Botanic Garden, Horticultural Society of New York, and Planting Fields Arboretum, to be held in New York, New York on June 10-14, 2003, but I lack adequate institutional support to do so.

Please consider this as my application for assistance in attending the meeting.

**Name:** \_\_\_\_\_

**Title:** \_\_\_\_\_

**Address:** \_\_\_\_\_

\_\_\_\_\_

**Phone No.:** \_\_\_\_\_

**Date:** \_\_\_\_\_

**(Countersigned):** \_\_\_\_\_  
(Director of Institution)

\_\_\_\_\_  
(Name of Institution)

\_\_\_\_\_  
(Date)

**Please mail or fax completed application to:** Charlotte Tancin - Secretary, CBHL  
Hunt Institute for Botanical Documentation  
Carnegie Mellon University  
5000 Forbes Avenue  
Pittsburgh, PA 15213-3890  
Fax: 412-268-5677

**PLEASE NOTE: DEADLINE FOR RECEIPT OF APPLICATION – January 31, 2003**



*The Council on Botanical and Horticultural Libraries, Inc. Newsletter* is an official publication of CBHL, an international organization of botany and horticulture libraries and librarians and others supportive of CBHL's goals. The quarterly *Newsletter* is sent by mail to all current members of CBHL. Submissions to the *Newsletter* are welcome according to the following schedule for 2003 will be February (Copy due 1/15); May (4/15); August (7/15); November (10/15).

Publications Committee Chair, Judith Reed <jreed@bestweb.net>  
Newsletter Editor, Christine Liebson <c\_liebson@hotmail.com>

Visit the CBHL Website  
[www.ville.montreal.qc.ca/jardin/cbhl](http://www.ville.montreal.qc.ca/jardin/cbhl)

**JOIN CBHL TODAY**

Join us and receive the CBHL *Newsletter*, Membership Directory, e-mail discussion list, members only web pages, and annual meeting materials.

Student ..... \$35  
Regular..... \$55  
Retired .....\$35  
Institutional..... \$105

Amount enclosed \$ \_\_\_\_\_

Name \_\_\_\_\_

Title \_\_\_\_\_

Institution \_\_\_\_\_

Address \_\_\_\_\_

City, State, Zip/Postal Code \_\_\_\_\_

Country \_\_\_\_\_

Telephone/Fax \_\_\_\_\_

Return to : Lisa DeCesare, CBHL  
Membership Manager, Harvard  
University Botany Libraries, 22  
Divinity Ave., Cambridge,  
Massachusetts 02138

CBHL Newsletter, c/o Charlotte Tancin, Secretary  
Council on Botanical and Horticultural Libraries, Inc.  
Hunt Institute for Botanical Documentation  
Carnegie Mellon University, 5000 Forbes Avenue  
Pittsburgh, Pennsylvania 15213-3890